



EverTUFF® CPVC Schedule 40 & 80 Marine Pressure Pipe & Fittings



PRODUCT

Contact Spears® for any Information not found.



Schedule 40 CPVC Pipe - ABS & USCG Approved

Part Number	Size	Std Pk	Mstr Ctn	Prod Code
-------------	------	--------	----------	-----------

Pipe - CPVC Schedule 40 Plain End

10' Lengths, Price Per Foot



CG-PD400-005C10	1/2	10	0	175
CG-PD400-007C10	3/4	10	0	175
CG-PD400-010C10	1	10	0	175
CG-PD400-012C10	1-1/4	10	0	175
CG-PD400-015C10	1-1/2	10	0	175
CG-PD400-020C10	2	10	0	175
CG-PD400-025C10	2-1/2	10	0	175
CG-PD400-030C10	3	10	0	175
CG-PD400-040C10	4	10	0	175
CG-PD400-060C10	6	10	0	175
CG-PD400-080C10	8	10	0	175
CG-PD400-100C10	10	10	0	175
CG-PD400-120C10	12	10	0	175

Pipe - CPVC Schedule 40 Plain End - MARINE

20' Lengths, Price Per Foot



CG-PD-400-005C	1/2	20	0	175
CG-PD-400-007C	3/4	20	0	175
CG-PD-400-010C	1	20	0	175
CG-PD-400-012C	1-1/4	20	0	175
CG-PD-400-015C	1-1/2	20	0	175
CG-PD-400-020C	2	20	0	175
CG-PD-400-025C	2-1/2	20	0	175
CG-PD-400-030C	3	20	0	175
CG-PD-400-040C	4	20	0	175
CG-PD-400-060C	6	20	0	175
CG-PD-400-080C	8	20	0	175
CG-PD-400-100C	10	20	0	175
CG-PD-400-120C	12	20	0	175

Schedule 80 CPVC Pipe - ABS & USCG Approved

Pipe - CPVC Schedule 80 Plain End - MARINE

10' Lengths, Price Per Foot



CG-PD800-005C10	1/2	10	0	175
CG-PD800-007C10	3/4	10	0	175
CG-PD800-010C10	1	10	0	175
CG-PD800-012C10	1-1/4	10	0	175
CG-PD800-015C10	1-1/2	10	0	175
CG-PD800-020C10	2	10	0	175
CG-PD800-025C10	2-1/2	10	0	175

Part Number	Size	Std Pk	Mstr Ctn	Prod Code
-------------	------	--------	----------	-----------

Pipe - CPVC Schedule 80 Plain End - MARINE (continued)

10' Lengths, Price Per Foot

CG-PD800-030C10	3	10	0	175
CG-PD800-040C10	4	10	0	175
CG-PD800-060C10	6	10	0	175
CG-PD800-080C10	8	10	0	175
CG-PD800-100C10	10	10	0	175
CG-PD800-120C10	12	10	0	175

Pipe - CPVC Schedule 80 Plain End - MARINE

20' Lengths, Price Per Foot



CG-PD-800-005C	1/2	20	0	175
CG-PD-800-007C	3/4	20	0	175
CG-PD-800-010C	1	20	0	175
CG-PD-800-012C	1-1/4	20	0	175
CG-PD-800-015C	1-1/2	20	0	175
CG-PD-800-020C	2	20	0	175
CG-PD-800-025C	2-1/2	20	0	175
CG-PD-800-030C	3	20	0	175
CG-PD-800-040C	4	20	0	175
CG-PD-800-060C	6	20	0	175
CG-PD-800-080C	8	20	0	175
CG-PD-800-100C	10	20	0	175
CG-PD-800-120C	12	20	0	175

EverTUFF® CPVC Schedule 40 & 80 Marine Pressure Pipe & Fittings

Tee - MARINE

Socket x Socket x Socket



CG-801-005C	1/2	25	200	172
CG-801-007C	3/4	15	120	172
CG-801-010C	1	25	0	172
CG-801-012C	1-1/4	10	0	172
CG-801-015C	1-1/2	10	0	172
CG-801-020C	2	10	0	172
CG-801-025C	2-1/2	10	0	172
CG-801-030C	3	5	0	172
CG-801-040C	4	5	0	172
CG-801-060C	6	2	0	172
CG-801-080C	8	2	0	172
CG-801-100C	10	1	0	181
CG-801-120C	12	1	0	181

Tee - Reducing - MARINE

Socket x Socket x Socket



CG-801-101C	3/4X1/2	15	120	172
CG-801-130C	1X1/2	15	0	172



Marine & Offshore Products
EverTUFF® CPVC Schedule 40 & 80 Marine Pressure Pipe & Fittings

EverTUFF® CPVC Schedule 40 & 80 Marine Pressure Pipe & Fittings

Part Number	Size	Std Pk	Mstr Ctn	Prod Code
-------------	------	--------	----------	-----------

Tee - Reducing - MARINE (continued)

Socket x Socket x Socket

CG-801-131C	1X3/4	15	0	172
CG-801-157C	1-1/4X1X3/4	12	0	172
CG-801-158C	1-1/4X1X1	15	0	172
CG-801-159C	1-1/4X1X1-1/4	15	0	172
CG-801-166C ¹	1-1/4X1/2	10	0	172
CG-801-167C	1-1/4X3/4	12	0	172
CG-801-168C	1-1/4X1	15	0	172
CG-801-202C	1-1/2X1-1/4X1	10	0	172
CG-801-209C	1-1/2X1/2	10	0	172
CG-801-210C	1-1/2X3/4	15	0	172
CG-801-211C	1-1/2X1	10	0	172
CG-801-212C	1-1/2X1-1/4	10	0	172
CG-801-247C	2X1/2	10	0	172
CG-801-248C	2X3/4	10	0	172
CG-801-249C	2X1	10	0	172
CG-801-250C	2X1-1/4	10	0	172
CG-801-251C	2X1-1/2	10	0	172
CG-801-254C ¹	2X2X4	4	0	172
CG-801-287C	2-1/2X1/2	10	0	172
CG-801-288C	2-1/2X3/4	10	0	172
CG-801-289C	2-1/2X1	10	0	172
CG-801-290C	2-1/2X1-1/4	10	0	172
CG-801-291C	2-1/2X1-1/2	10	0	172
CG-801-292C	2-1/2X2	10	0	172
CG-801-333C ¹	3X1/2	5	0	172
CG-801-334C ¹	3X3/4	6	0	172
CG-801-335C	3X1	5	0	172
CG-801-336C ¹	3X1-1/4	5	0	172
CG-801-337C	3X1-1/2	5	0	172
CG-801-338C	3X2	5	0	172
CG-801-339C	3X2-1/2	6	0	172
CG-801-415C ¹	4X1/2	5	0	172
CG-801-416C	4X3/4	5	0	172
CG-801-417C	4X1	5	0	172
CG-801-418C ¹	4X1-1/4	5	0	172
CG-801-419C	4X1-1/2	5	0	172
CG-801-420C	4X2	5	0	172
CG-801-421C ¹	4X2-1/2	5	0	172
CG-801-422C	4X3	5	0	172
CG-801-426C	4X6	4	0	172
CG-801-524C ¹	6X3/4	5	0	172
CG-801-525C	6X1	6	0	172
CG-801-526C ¹	6X1-1/4	4	0	172
CG-801-527C ¹	6X1-1/2	4	0	172
CG-801-528C	6X2	6	0	172
CG-801-529C ¹	6X2-1/2	4	0	172
CG-801-530C	6X3	5	0	172
CG-801-532C	6X4	5	0	172
CG-801-578C ¹	8X2	2	0	172
CG-801-580C ¹	8X3	2	0	172

Part Number	Size	Std Pk	Mstr Ctn	Prod Code
-------------	------	--------	----------	-----------

Tee - Reducing - MARINE (continued)

Socket x Socket x Socket

CG-801-582C ¹	8X4	2	0	172
CG-801-585C	8X6	2	0	172
CG-801-621C	10X2	1	0	181
CG-801-623C ¹	10X3	1	0	181
CG-801-624C ¹	10X4	1	0	181
CG-801-626C	10X6	1	0	181
CG-801-628C ¹	10X8	1	0	181
CG-801-664C ¹	12X4	1	0	181
CG-801-666C ¹	12X6	1	0	181
CG-801-668C	12X8	1	0	181
CG-801-670C	12X10	1	0	181

¹ Sized with Bushing

Tee - Special Reinforced - MARINE

Socket x Socket x SR Fipt - Stainless Steel Collar



CG-802-005CSR	1/2	50	0	180
CG-802-007CSR	3/4	15	120	180
CG-802-010CSR	1	15	0	180
CG-802-012CSR	1-1/4	15	0	180
CG-802-015CSR	1-1/2	10	0	180
CG-802-020CSR	2	10	0	180
CG-802-030CSR	3	5	0	180
CG-802-040CSR	4	5	0	180

Tee - Special Reinforced Reducing - MARINE

Socket x Socket x SR Fipt - Stainless Steel Collar



CG-802-101CSR	3/4X1/2	50	0	180
CG-802-130CSR	1X1/2	50	0	180
CG-802-131CSR	1X3/4	15	0	180
CG-802-166CSR	1-1/4X1/2	15	0	180
CG-802-168CSR	1-1/4X1	10	0	180
CG-802-211CSR	1-1/2X1	10	0	180
CG-802-212CSR	1-1/2X1-1/4	10	0	180
CG-802-247CSR	2X1/2	10	0	180
CG-802-248CSR	2X3/4	10	0	180
CG-802-287CSR	2-1/2X1/2	10	0	180

90° EII - MARINE

Socket x Socket



CG-806-005C	1/2	20	240	172
CG-806-007C	3/4	20	160	172
CG-806-010C	1	25	0	172
CG-806-012C	1-1/4	10	0	172
CG-806-015C	1-1/2	10	0	172
CG-806-020C	2	25	0	172
CG-806-025C	2-1/2	5	0	172
CG-806-030C	3	6	0	172

Suitable for Oil-Free air handling to 25 psi, not for distribution of compressed air or gas
 See MSRP-1 Sheet or Check Spears® On-line Catalog @ www.spearsmfg.com for Pricing

Spears® Manufacturing Company

Marine & Offshore Products
EverTUFF® CPVC Schedule 40 & 80 Marine Pressure Pipe & Fittings



EverTUFF® CPVC Schedule 40 & 80 Marine Pressure Pipe & Fittings

Part Number	Size	Std Pk	Mstr Ctn	Prod Code
-------------	------	--------	----------	-----------

90° EII - MARINE (continued)

Socket x Socket

CG-806-040C	4	5	0	172
CG-806-060C	6	4	0	172
CG-806-080C	8	2	0	172
CG-806-100C	10	1	0	181
CG-806-120C	12	1	0	181

90° EII - Sweep - MARINE

Socket x Socket

CG-806-005SC	1/2	25	150	172
CG-806-007SC	3/4	25	100	172
CG-806-010SC	1	20	0	172
CG-806-012SC	1-1/4	25	0	172
CG-806-015SC	1-1/2	25	0	172
CG-806-020SC	2	25	0	172

90° EII - Long Sweep - MARINE

Socket x Socket

CG-806-005LSCF	1/2	25	0	182
CG-806-007LSCF	3/4	25	0	182
CG-806-010LSCF	1	25	0	182
CG-806-012LSCF	1 1/4	25	0	182
CG-806-015LSCF	1 1/2	25	0	182
CG-806-020LSCF	2	1	10	182
CG-806-025LSCF	2-1/2	1	7	182
CG-806-030LSCF	3	1	5	182
CG-806-040LSCF	4	1	4	182
CG-806-060LSCF	6	1	2	182
CG-806-080LSCF	8	1	0	182
CG-806-100LSCF	10	1	0	183

90° EII - Special Reinforced - MARINE

Socket x SR Fipt - Stainless Steel Collar

CG-807-005CSR	1/2	20	240	180
CG-807-007CSR	3/4	75	0	180
CG-807-010CSR	1	50	0	180
CG-807-012CSR	1-1/4	25	0	180
CG-807-015CSR	1-1/2	10	0	180
CG-807-020CSR	2	10	0	180
CG-807-030CSR	3	5	0	180
CG-807-040CSR	4	5	0	180

Part Number	Size	Std Pk	Mstr Ctn	Prod Code
-------------	------	--------	----------	-----------

90° Street EII - MARINE

Spigot x Socket

CG-809-005C	1/2	50	200	172
CG-809-007C	3/4	50	0	172
CG-809-010C	1	50	0	172
CG-809-012C	1-1/4	25	0	172
CG-809-015C	1-1/2	10	0	172
CG-809-020C	2	25	0	172
CG-809-025C	2-1/2	5	0	172
CG-809-030C	3	5	0	172
CG-809-040C	4	4	0	172
CG-809-060C	6	1	0	172
CG-809-080C	8	2	0	172
CG-809-100C	10	1	0	181
CG-809-120C	12	1	0	181

11-1/4° EII - MARINE

Socket x Socket

CG-811-005CF	1/2	1	52	182
CG-811-007CF	3/4	1	20	182
CG-811-010CF	1	1	50	182
CG-811-012CF	1-1/4	1	26	182
CG-811-015C	1-1/2	25	0	172
CG-811-020C	2	10	0	172
CG-811-025CF	2-1/2	1	25	182
CG-811-030C	3	10	0	172
CG-811-040C	4	4	0	172
CG-811-060CF	6	1	5	182
CG-811-080CF	8	1	3	182
CG-811-100CF	10	1	2	183
CG-811-120CF	12	1	2	183

45° EII - MARINE

Socket x Socket

CG-817-005C	1/2	20	120	172
CG-817-007C	3/4	20	120	172
CG-817-010C	1	15	120	172
CG-817-012C	1-1/4	10	80	172
CG-817-015C	1-1/2	10	0	172
CG-817-020C	2	10	0	172
CG-817-025C	2-1/2	5	0	172
CG-817-030C	3	5	0	172
CG-817-040C	4	5	0	172
CG-817-060C	6	4	0	172
CG-817-080C	8	2	0	172
CG-817-100C	10	1	0	181
CG-817-120C	12	1	0	181



Marine & Offshore Products
EverTUFF® CPVC Schedule 40 & 80 Marine Pressure Pipe & Fittings

EverTUFF® CPVC Schedule 40 & 80 Marine Pressure Pipe & Fittings

Part Number	Size	Std Pk	Mstr Ctn	Prod Code
-------------	------	--------	----------	-----------

15° Ell - MARINE



Socket x Socket

Part Number	Size	Std Pk	Mstr Ctn	Prod Code
CG-818-005CF	1/2	1	25	182
CG-818-007CF	3/4	1	23	182
CG-818-010CF	1	1	20	182
CG-818-012CF	1-1/4	1	15	182
CG-818-015CF	1-1/2	1	25	182
CG-818-020CF	2	1	25	182
CG-818-025CF	2-1/2	1	18	182
CG-818-030CF	3	1	35	182
CG-818-040CF	4	1	18	182
CG-818-060CF	6	1	8	182
CG-818-080CF	8	1	3	182
CG-818-100CF	10	1	2	183
CG-818-120CF	12	1	0	183

45° Street Ell - MARINE



Spigot x Socket

Part Number	Size	Std Pk	Mstr Ctn	Prod Code
CG-827-005C	1/2	50	400	172
CG-827-007C	3/4	50	0	172
CG-827-010C	1	50	0	172
CG-827-012C	1-1/4	25	0	172
CG-827-015C	1-1/2	25	0	172
CG-827-020C	2	10	0	172
CG-827-025C	2-1/2	12	0	172
CG-827-030C	3	10	0	172
CG-827-040C	4	5	0	172
CG-827-060C	6	4	0	172
CG-827-080C	8	2	0	172
CG-827-100C	10	1	0	181
CG-827-120C	12	1	0	181

Cross - MARINE



Socket x Socket x Socket x Socket

Part Number	Size	Std Pk	Mstr Ctn	Prod Code
CG-820-005C	1/2	50	0	172
CG-820-007C	3/4	50	0	172
CG-820-010C	1	50	0	172
CG-820-012C	1-1/4	25	0	174
CG-820-015C	1-1/2	25	0	172
CG-820-020C	2	10	0	172
CG-820-025C	2-1/2	10	0	172
CG-820-030C	3	5	0	172
CG-820-040C	4	3	0	172
CG-820-060CF	6	1	0	182

Part Number	Size	Std Pk	Mstr Ctn	Prod Code
-------------	------	--------	----------	-----------

Cross - MARINE (continued)

Socket x Socket x Socket x Socket

CG-820-080CF	8	1	0	182
CG-820-100CF	10	1	0	183
CG-820-120CF	12	1	0	183

Coupling - MARINE



Socket x Socket

Part Number	Size	Std Pk	Mstr Ctn	Prod Code
CG-829-005C	1/2	25	150	172
CG-829-007C	3/4	15	90	172
CG-829-010C	1	15	90	172
CG-829-012C	1-1/4	10	60	172
CG-829-015C	1-1/2	10	40	172
CG-829-020C	2	20	0	172
CG-829-025C	2-1/2	10	0	172
CG-829-030C	3	5	0	172
CG-829-040C	4	5	0	172
CG-829-060C	6	4	0	172
CG-829-080C	8	4	0	172
CG-829-100C	10	1	0	181
CG-829-120C	12	1	0	172

Coupling - Reducing - MARINE



Socket x Socket

Part Number	Size	Std Pk	Mstr Ctn	Prod Code
CG-829-101C	3/4X1/2	50	400	172
CG-829-130C	1X1/2	25	200	172
CG-829-131C	1X3/4	25	200	172
CG-829-166C	1-1/4X1/2	25	0	172
CG-829-167C	1-1/4X3/4	25	0	172
CG-829-168C	1-1/4X1	25	0	172
CG-829-209C	1-1/2X1/2	25	0	172
CG-829-210C	1-1/2X3/4	25	0	172
CG-829-211C	1-1/2X1	25	0	172
CG-829-212C	1-1/2X1-1/4	25	0	172
CG-829-247C	2X1/2	25	0	172
CG-829-248C	2X3/4	10	80	172
CG-829-249C	2X1	25	0	172
CG-829-251C	2X1-1/2	10	40	172
CG-829-290C	2-1/2X1-1/4	10	0	172
CG-829-291C	2-1/2X1-1/2	10	0	172
CG-829-292C	2-1/2X2	10	0	172
CG-829-335C	3X1	8	0	172
CG-829-336C	3X1-1/4	6	0	172
CG-829-337C	3X1-1/2	8	0	172
CG-829-338C	3X2	10	0	172
CG-829-339C	3X2-1/2	10	0	172
CG-829-416C	4X3/4	4	0	172
CG-829-417C	4X1	4	0	172
CG-829-419C	4X1-1/2	4	0	172
CG-829-420C	4X2	6	0	172
CG-829-421C	4X2-1/2	4	0	172

Marine & Offshore Products
EverTUFF® CPVC Schedule 40 & 80 Marine Pressure Pipe & Fittings



EverTUFF® CPVC Schedule 40 & 80 Marine Pressure Pipe & Fittings

Part Number	Size	Std Pk	Mstr Ctn	Prod Code
-------------	------	--------	----------	-----------

Coupling - Reducing - MARINE (continued)

Socket x Socket

CG-829-422C	4X3	4	0	172
CG-829-528C	6X2	6	0	172
CG-829-529C	6X2-1/2	4	0	172
CG-829-530C	6X3	12	0	172
CG-829-532C	6X4	4	0	172
CG-829-580CF	8X3	1	6	182
CG-829-582C	8X4	2	0	172
CG-829-585C	8X6	2	0	172
CG-829-621CF	10X2	1	0	183
CG-829-623CF	10X3	1	2	183
CG-829-624CF	10X4	1	2	183
CG-829-626C	10X6	1	0	181
CG-829-628C	10X8	1	0	181
CG-829-664CF	12X4	1	2	183
CG-829-666CF	12X6	1	0	183
CG-829-668C	12X8	1	0	181
CG-829-670CF	12X10	1	2	183

Grooved Coupling Adapter - MARINE



Groove x Socket

CG-833-012C	1-1/4	10	60	172
CG-833-015C	1-1/2	10	80	172
CG-833-020C	2	5	40	172
CG-833-025C	2-1/2	5	0	172
CG-833-030C	3	5	0	172
CG-833-040C	4	5	0	172
CG-833-060C	6	5	0	172
CG-833-080CF	8	1	4	182
CG-833-100CF	10	1	0	183
CG-833-120CF	12	1	0	183

Female Adapter - Special Reinforced - MARINE

Socket x SR Fipt - Stainless Steel Collar



CG-835-005CSR	1/2	25	150	180
CG-835-007CSR	3/4	25	150	180
CG-835-010CSR	1	25	200	180
CG-835-012CSR	1-1/4	10	60	180
CG-835-015CSR	1-1/2	10	80	180
CG-835-020CSR	2	10	0	180
CG-835-025CSR	2 1/2	5	0	180
CG-835-030CSR	3	15	0	180
CG-835-040CSR	4	5	0	180
CG-835-060CSR	6	6	0	180

Part Number	Size	Std Pk	Mstr Ctn	Prod Code
-------------	------	--------	----------	-----------

Female Adapter - Special Reinforced Reducing - MARINE



Socket x SR Fipt - Stainless Steel Collar

CG-835-074CSR	1/2X3/4	50	400	180
CG-835-101CSR	3/4X1/2	50	400	180
CG-835-102CSR	3/4X1	50	0	180
CG-835-130CSR	1X1/2	50	0	180
CG-835-131CSR	1X3/4	25	200	180

Female Adapter- Special Reinforced-Marine-Metric



Spigot X BSPT- Stainless Steel Collar

CG-378-005CSR	1/2	50	600	180
CG-378-007CSR	3/4	25	300	180
CG-378-010CSR	1	50	0	180
CG-378-015CSR	1-1/2	25	0	180
CG-378-020CSR	2	15	0	180

Female Adapter - Stainless Steel Transition - MARINE



Spigot x Fipt With Type 316 Stainless Steel Thread Insert

CG-835-005CSS	1/2	25	150	180
CG-835-007CSS	3/4	15	90	180
CG-835-010CSS	1	15	90	180
CG-835-012CSS	1-1/4	25	0	180
CG-835-015CSS	1-1/2	10	40	180
CG-835-020CSS	2	8	32	180

Female Adapter - Encapsulated Special Reinforced - MARINE



Socket x ESR Fipt

CG-835-005CESR	1/2	25	300	180
CG-835-007CESR	3/4	25	300	180
CG-835-010CESR	1	25	200	180
CG-835-012CESR	1-1/4	10	80	180
CG-835-015CESR	1-1/2	10	80	180
CG-835-020CESR	2	10	0	180

Male Adapter - MARINE

Mipt x Socket



CG-836-005C	1/2	25	150	172
CG-836-007C	3/4	25	150	172
CG-836-102C	3/4X1	25	0	172
CG-836-131C	1X3/4	25	0	172
CG-836-010C	1	20	240	172
CG-836-012C	1-1/4	10	60	172
CG-836-015C	1-1/2	10	120	172
CG-836-020C	2	10	80	172

Made in the U.S.A.

Suitable for Oil-Free air handling to 25 psi, not for distribution of compressed air or gas
 See MSRP-1 Sheet or Check Spears® On-line Catalog @ www.spearsmfg.com for Pricing



Marine & Offshore Products
EverTUFF® CPVC Schedule 40 & 80 Marine Pressure Pipe & Fittings

EverTUFF® CPVC Schedule 40 & 80 Marine Pressure Pipe & Fittings

Part Number	Size	Std Pk	Mstr Ctn	Prod Code
-------------	------	--------	----------	-----------

Male Adapter - MARINE (continued)

Mipt x Socket

CG-836-025C	2-1/2	10	0	172
CG-836-030C	3	5	0	172
CG-836-040C	4	5	0	172
CG-836-060C	6	5	0	172
CG-836-080CF	8	1	2	182
CG-836-100CF	10	1	2	183
CG-836-120CF	12	1	0	183

Male Adapter - Internal Reinforced - MARINE



R Mipt x Socket - Stainless Steel Sleeve

CG-836-005CR	1/2	25	150	180
CG-836-007CR	3/4	25	300	180
CG-836-010CR	1	10	120	180
CG-836-012CR	1-1/4	10	60	180
CG-836-015CR	1-1/2	10	120	180
CG-836-020CR	2	10	0	180

Male Spigot Adapter - MARINE



Spigot x Mipt

CG-861-005C	1/2	50	300	172
CG-861-007C	3/4	25	150	172
CG-861-010C	1	50	0	172
CG-861-131C	1X3/4	50	200	172
CG-861-012C	1-1/4	25	200	172
CG-861-015C	1-1/2	25	0	172
CG-861-020C	2	25	0	172

Female Spigot Adapter - Special Reinforced - MARINE



Spigot x SR Fipt - Stainless Steel Collar

CG-878-005CSR	1/2	50	600	180
CG-878-007CSR	3/4	25	300	180
CG-878-010CSR	1	50	0	180
CG-878-012CSR	1-1/4	25	0	180
CG-878-015CSR	1-1/2	25	0	180
CG-878-020CSR	2	15	0	180
CG-878-030CSR	3	5	0	180
CG-878-040CSR	4	5	0	180

Female Spigot Adapter - Stainless Steel Transition - MARINE



Socket x Fipt With Type 316 Stainless Steel Thread Insert

CG-878-005CSS	1/2	25	150	180
---------------	-----	----	-----	-----

Part Number	Size	Std Pk	Mstr Ctn	Prod Code
-------------	------	--------	----------	-----------

Female Spigot Adapter - Stainless Steel Transition - MARINE

(continued)

Socket x Fipt With Type 316 Stainless Steel Thread Insert

CG-878-007CSS	3/4	25	150	180
CG-878-010CSS	1	15	90	180

Reducer Bushing Flush Style - MARINE



Spigot x Socket

CG-837-101C	3/4X1/2	50	300	172
CG-837-130C	1X1/2	50	400	172
CG-837-131C	1X3/4	50	300	172
CG-837-166C	1-1/4X1/2	25	300	172
CG-837-167C	1-1/4X3/4	25	150	172
CG-837-168C	1-1/4X1	25	150	172
CG-837-209C	1-1/2X1/2	25	200	172
CG-837-210C	1-1/2X3/4	25	200	172
CG-837-211C	1-1/2X1	25	200	172
CG-837-212C	1-1/2X1-1/4	25	200	172
CG-837-247C	2X1/2	10	120	172
CG-837-248C	2X3/4	10	60	172
CG-837-249C	2X1	10	120	172
CG-837-250C	2X1-1/4	10	60	172
CG-837-251C	2X1-1/2	10	60	172
CG-837-289C	2-1/2X1	10	80	172
CG-837-290C	2-1/2X1-1/4	10	80	172
CG-837-291C	2-1/2X1-1/2	10	40	172
CG-837-292C	2-1/2X2	15	0	172
CG-837-333C	3X1/2	10	0	172
CG-837-334C ¹	3X3/4	10	0	172
CG-837-335C	3X1	10	0	172
CG-837-336C	3X1-1/4	10	0	172
CG-837-337C	3X1-1/2	10	0	172
CG-837-338C	3X2	10	0	172
CG-837-339C	3X2-1/2	15	0	172
CG-837-416C ¹	4X3/4	10	0	172
CG-837-418C ¹	4X1-1/4	6	0	172
CG-837-419C	4X1-1/2	6	0	172
CG-837-420C	4X2	6	0	172
CG-837-421C	4X2-1/2	6	0	172
CG-837-422C	4X3	6	0	172
CG-837-525C ¹	6X1	5	0	172
CG-837-527C ¹	6X1-1/2	5	0	172
CG-837-528C	6X2	5	0	172
CG-837-530C	6X3	5	0	172
CG-837-532C	6X4	5	0	172
CG-837-578C ¹	8X2	4	0	172
CG-837-580C	8X3	4	0	172
CG-837-582C	8X4	4	0	172
CG-837-585C	8X6	4	0	172
CG-837-621C ¹	10X2	2	0	181
CG-837-624C ¹	10X4	4	0	181
CG-837-626C	10X6	3	0	181
CG-837-628C	10X8	3	0	181

Marine & Offshore Products
EverTUFF® CPVC Schedule 40 & 80 Marine Pressure Pipe & Fittings



EverTUFF® CPVC Schedule 40 & 80 Marine Pressure Pipe & Fittings

Part Number	Size	Std Pk	Mstr Ctn	Prod Code
Reducer Bushing Flush Style - MARINE (continued)				
Spigot x Socket				
CG-837-664C ¹	12X4	2	0	181
CG-837-668C	12X8	2	0	181
CG-837-670CF	12X10	1	3	183

¹ Sized with Bushing

Reducer Bushing Flush Style - MARINE



Spigot x Fipt

CG-838-101C	3/4X1/2	50	600	172
CG-838-130C	1X1/2	50	400	172
CG-838-131C	1X3/4	50	400	172
CG-838-166C	1-1/4X1/2	25	150	172
CG-838-167C	1-1/4X3/4	25	300	172
CG-838-168C	1-1/4X1	25	300	172
CG-838-207C	1-1/2X1/4	25	200	172
CG-838-209C	1-1/2X1/2	25	200	172
CG-838-210C	1-1/2X3/4	25	200	172
CG-838-211C	1-1/2X1	25	200	172
CG-838-212C	1-1/2X1-1/4	25	200	172
CG-838-247C	2X1/2	10	120	172
CG-838-248C	2X3/4	10	60	172
CG-838-249C	2X1	10	120	172
CG-838-250C	2X1-1/4	10	120	172
CG-838-251C	2X1-1/2	10	120	172
CG-838-287C	2-1/2X1/2	10	0	172
CG-838-288C	2-1/2X3/4	10	40	172
CG-838-289C	2-1/2X1	10	40	172
CG-838-290C	2-1/2X1-1/4	10	0	172
CG-838-291C	2-1/2X1-1/2	10	40	172
CG-838-292C	2-1/2X2	10	40	172
CG-838-334C	3X3/4	10	0	172
CG-838-335C	3X1	10	0	172
CG-838-336C	3X1-1/4	10	0	172
CG-838-337C	3X1-1/2	10	0	172
CG-838-338C	3X2	10	0	172
CG-838-339C	3X2-1/2	10	0	172
CG-838-420C	4X2	6	0	172
CG-838-421C	4X2-1/2	6	0	172
CG-838-422C	4X3	6	0	172
CG-838-528C	6X2	5	0	172
CG-838-530C	6X3	5	0	172
CG-838-532C	6X4	5	0	172

Reducer Bushing - Special Reinforced - MARINE



Spigot x SR Fipt - Stainless Steel Collar

CG-838-209CSR	1-1/2X1/2	10	120	180
---------------	-----------	----	-----	-----

Part Number	Size	Std Pk	Mstr Ctn	Prod Code
-------------	------	--------	----------	-----------

Reducer Bushing - Special Reinforced - MARINE (continued)

Spigot x SR Fipt - Stainless Steel Collar

CG-838-210CSR	1-1/2X3/4	10	120	180
CG-838-247CSR	2X1/2	10	80	180
CG-838-248CSR	2X3/4	10	80	180
CG-838-249CSR	2X1	10	120	180
CG-838-334CSR	3X3/4	10	0	180
CG-838-335CSR	3X1	10	0	180
CG-838-336CSR	3X1-1/4	10	0	180
CG-838-337CSR	3X1-1/2	10	0	180
CG-838-528CSR	6X2	5	0	180
CG-838-530CSR	6X3	5	0	180
CG-838-532CSR	6X4	5	0	180

Cap - MARINE



Socket

CG-847-005C	1/2	50	300	172
CG-847-007C	3/4	25	300	172
CG-847-010C	1	15	90	172
CG-847-012C	1-1/4	10	60	172
CG-847-015C	1-1/2	10	60	172
CG-847-020C	2	10	80	172
CG-847-025C	2-1/2	5	40	172
CG-847-030C	3	5	0	172
CG-847-040C	4	5	0	172
CG-847-060C	6	4	0	172
CG-847-080C	8	3	0	172
CG-847-100CF	10	1	5	183
CG-847-120CF	12	1	4	183

CAP - MARINE



Fipt

CG-848-005C	1/2	25	150	172
CG-848-007C	3/4	25	300	172
CG-848-010C	1	15	90	172
CG-848-012C	1-1/4	10	60	172
CG-848-015C	1-1/2	10	120	172
CG-848-020C	2	10	80	172
CG-848-025C	2-1/2	5	40	172
CG-848-030C	3	5	0	172
CG-848-040C	4	5	0	172
CG-848-060CF	6	1	4	182
CG-848-080CF	8	1	0	182

Cap - Special Reinforced - MARINE



SR Fipt - Stainless Steel Collar

CG-848-005CSR	1/2	50	300	180
CG-848-007CSR	3/4	25	300	180
CG-848-030CSR	3	5	0	180

Made in the U.S.A.

Suitable for Oil-Free air handling to 25 psi, not for distribution of compressed air or gas
 See MSRP-1 Sheet or Check Spears® On-line Catalog @ www.spearsmfg.com for Pricing



Marine & Offshore Products
EverTUFF® CPVC Schedule 40 & 80 Marine Pressure Pipe & Fittings

EverTUFF® CPVC Schedule 40 & 80 Marine Pressure Pipe & Fittings

Part Number	Size	Std Pk	Mstr Ctn	Prod Code
-------------	------	--------	----------	-----------

Plug - MARINE



Spigot

CG-849-005C	1/2	50	300	172
CG-849-007C	3/4	50	300	172
CG-849-010C	1	50	200	172
CG-849-012C	1-1/4	25	100	172
CG-849-015C	1-1/2	10	120	172
CG-849-020C	2	10	120	172
CG-849-025CF ⁴	2-1/2	1	8	182
CG-849-030CF ⁴	3	1	4	182
CG-849-040CF ⁴	4	1	4	182
CG-849-060CF ⁴	6	1	6	182
CG-849-080CF ⁴	8	1	6	182
CG-849-100CF ⁴	10	1	2	183
CG-849-120CF ⁴	12	1	0	183

⁴ Plug fabricated using Cap and pipe spigot.

Plug - MARINE



Mipt

CG-850-005C	1/2	50	500	172
CG-850-007C	3/4	50	300	172
CG-850-010C	1	25	175	172
CG-850-012C	1-1/4	25	150	172
CG-850-015C	1-1/2	25	150	172
CG-850-020C	2	10	120	172
CG-850-025C	2-1/2	5	30	172
CG-850-030C	3	5	40	172
CG-850-040C	4	5	0	172
CG-850-060C	6	6	0	172
CG-850-080C	8	6	0	172
CG-850-100CF ⁴	10	1	3	183
CG-850-120CF ⁴	12	1	0	183

⁴ Plug fabricated using Cap and threaded pipe.

Wye - MARINE



Socket x Socket x Socket

1/2" - 2" - 235 psi Maximum Internal Pressure Rating @ 73°F (23°C)

2-1/2" - 6" - 150 psi Maximum Internal Pressure Rating @ 73°F (23°C)

8" - Larger & All Fabricated Sizes - 100 psi Maximum Internal Pressure Rating @ 73°F (23°C)

CG-875-005C	1/2	25	100	172
CG-875-007C	3/4	25	0	172

Part Number	Size	Std Pk	Mstr Ctn	Prod Code
-------------	------	--------	----------	-----------

Wye - MARINE (continued)

Socket x Socket x Socket

CG-875-010C	1	20	0	172
CG-875-012C	1-1/4	20	0	172
CG-875-015C	1-1/2	20	0	172
CG-875-020C	2	10	0	172
CG-875-025C	2-1/2	6	0	172
CG-875-030C	3	5	0	172
CG-875-040C	4	4	0	172
CG-875-060C	6	3	0	172
CG-875-080C	8	1	0	172

Wye - Reducing - MARINE



Socket x Socket x Socket

1/2" - 2" - 235 psi Maximum Internal Pressure Rating @ 73°F (23°C)

2-1/2" - 6" - 150 psi Maximum Internal Pressure Rating @ 73°F (23°C)

8" - Larger & All Fabricated Sizes - 100 psi Maximum Internal Pressure Rating @ 73°F (23°C)

CG-875-101C ¹	3/4X1/2	25	0	172
CG-875-130C ¹	1X1/2	20	0	172
CG-875-131C ¹	1X3/4	20	0	172
CG-875-166C ¹	1-1/4X1/2	20	0	172
CG-875-167C ¹	1-1/4X3/4	20	0	172
CG-875-168C ¹	1-1/4X1	20	0	172
CG-875-209C ¹	1-1/2X1/2	20	0	172
CG-875-210C ¹	1-1/2X3/4	20	0	172
CG-875-211C ¹	1-1/2X1	20	0	172
CG-875-212C ¹	1-1/2X1-1/4	20	0	172
CG-875-247C ¹	2X1/2	10	0	172
CG-875-248C ¹	2X3/4	10	0	172
CG-875-249C ¹	2X1	10	0	172
CG-875-250C ¹	2X1-1/4	10	0	172
CG-875-251C ¹	2X1-1/2	10	0	172
CG-875-335C ¹	3X1	5	0	172
CG-875-336C ¹	3X1-1/4	5	0	172
CG-875-337C ¹	3X1-1/2	5	0	172
CG-875-338C ¹	3X2	4	0	172
CG-875-339C ¹	3X2-1/2	5	0	172
CG-875-420C	4X2	4	0	172
CG-875-422C	4X3	4	0	172
CG-875-528C ¹	6X2	5	0	172
CG-875-530C ¹	6X3	5	0	172
CG-875-532C	6X4	5	0	172
CG-875-578C ¹	8X2	2	0	172
CG-875-580C ¹	8X3	2	0	172
CG-875-582C	8X4	2	0	172
CG-875-585C ¹	8X6	1	0	172
CG-875-626C	10X6	1	0	181
CG-875-628C	10X8	1	0	181

¹ Sized with Bushing

Marine & Offshore Products
EverTUFF® CPVC Schedule 40 & 80 Marine Pressure Pipe & Fittings



EverTUFF® CPVC Schedule 40 & 80 Marine Pressure Pipe & Fittings

Part Number	Size	Std Pk	Mstr Ctn	Prod Code
-------------	------	--------	----------	-----------

Union 2000 - Socket/FKM - MARINE

Socket x Socket with FKM O-ring Seal



235 psi Maximum Internal Pressure Rating @ 73°F (23°C)

Part Number	Size	Std Pk	Mstr Ctn	Prod Code
CG-8057-005C	1/2	20	120	172
CG-8057-007C	3/4	20	80	172
CG-8057-010C	1	15	90	172
CG-8057-012C	1-1/4	10	0	172
CG-8057-015C	1-1/2	10	0	172
CG-8057-020C	2	5	0	172
CG-8057-025C	2-1/2	5	0	172
CG-8057-030C	3	5	0	172
CG-8057-040C	4	4	0	172
CG-8057-060C	6	1	0	172

Transition Union - IPS X Socket/FKM - Metric MARINE

IPS x DIN Socket with EPDM O-ring Seal



235 psi Maximum Internal Pressure Rating @ 73°F (23°C)

Part Number	Size	Std Pk	Mstr Ctn	Prod Code
CG-8657-020C	20	10	60	172
CG-8657-025C	25	10	40	172
CG-8657-032C	32	10	40	172
CG-8657-040C	40	10	0	172
CG-8657-050C	50	10	0	172
CG-8657-063C	63	5	0	172
CG-8657-090C	90	5	0	172
CG-8657-110C	110	4	0	172

Union 2000 - Fipt/FKM - MARINE

Fipt x Fipt with FKM O-ring Seal



235 psi Maximum Internal Pressure Rating @ 73°F (23°C)

Part Number	Size	Std Pk	Mstr Ctn	Prod Code
CG-8058-005C	1/2	20	120	172
CG-8058-007C	3/4	20	80	172
CG-8058-010C	1	15	90	172
CG-8058-012C	1-1/4	10	0	172
CG-8058-015C	1-1/2	10	0	172
CG-8058-020C	2	5	0	172
CG-8058-025C	2-1/2	5	0	172
CG-8058-030C	3	5	0	172
CG-8058-040C	4	4	0	172
CG-8058-060C	6	1	0	172

Part Number	Size	Std Pk	Mstr Ctn	Prod Code
-------------	------	--------	----------	-----------

Union 2000 - Socket/EPDM - MARINE

Socket x Socket with EPDM O-ring Seal



235 psi Maximum Internal Pressure Rating @ 73°F (23°C)

Part Number	Size	Std Pk	Mstr Ctn	Prod Code
CG-8097-005C	1/2	20	120	172
CG-8097-007C	3/4	20	80	172
CG-8097-010C	1	15	90	172
CG-8097-012C	1-1/4	10	0	172
CG-8097-015C	1-1/2	10	0	172
CG-8097-020C	2	5	0	172
CG-8097-025C	2-1/2	5	0	172
CG-8097-030C	3	5	0	172
CG-8097-040C	4	4	0	172
CG-8097-060C	6	1	0	172

Transition Union - IPS X Socket/EPDM - Metric MARINE

IPS x DIN Socket with EPDM O-ring Seal



235 psi Maximum Internal Pressure Rating @ 73°F (23°C)

Part Number	Size	Std Pk	Mstr Ctn	Prod Code
CG-8697-020C	20	20	160	172
CG-8697-025C	25	10	40	172
CG-8697-032C	32	15	90	172
CG-8697-040C	40	10	0	172
CG-8697-050C	50	10	0	172
CG-8697-063C	63	5	0	172
CG-8697-090C	90	5	0	172
CG-8697-110C	110	4	0	172

Union 2000 - Fipt/EPDM - MARINE

Fipt x Fipt with EPDM O-ring Seal



235 psi Maximum Internal Pressure Rating @ 73°F (23°C)

Part Number	Size	Std Pk	Mstr Ctn	Prod Code
CG-8098-005C	1/2	20	120	172
CG-8098-007C	3/4	20	80	172
CG-8098-010C	1	15	90	172
CG-8098-012C	1-1/4	10	0	172
CG-8098-015C	1-1/2	10	0	172
CG-8098-020C	2	5	0	172
CG-8098-025C	2-1/2	5	0	172
CG-8098-030C	3	5	0	172
CG-8098-040C	4	4	0	172
CG-8098-060C	6	1	0	172

Union 2000 - Special Reinforced Fipt/FKM - MARINE

SR Fipt x SR Fipt w/FKM O-ring Seal - Stainless Steel Collar



235 psi Maximum Internal Pressure Rating @ 73°F (23°C)

Part Number	Size	Std Pk	Mstr Ctn	Prod Code
CG-8058-005CSR	1/2	20	120	180
CG-8058-007CSR	3/4	20	80	180
CG-8058-010CSR	1	15	90	180

Made in the U.S.A.

Suitable for Oil-Free air handling to 25 psi, not for distribution of compressed air or gas
 See MSRP-1 Sheet or Check Spears® On-line Catalog @ www.spearsmfg.com for Pricing



Marine & Offshore Products
EverTUFF® CPVC Schedule 40 & 80 Marine Pressure Pipe & Fittings

EverTUFF® CPVC Schedule 40 & 80 Marine Pressure Pipe & Fittings

Part Number	Size	Std Pk	Mstr Ctn	Prod Code
-------------	------	--------	----------	-----------

Union 2000 - Special Reinforced Fipt/FKM - MARINE (continued)
SR Fipt x SR Fipt w/FKM O-ring Seal - Stainless Steel Collar

CG-8058-012CSR	1-1/4	10	0	180
CG-8058-015CSR	1-1/2	10	0	180
CG-8058-020CSR	2	5	0	180
CG-8058-025CSR	2-1/2	5	0	180
CG-8058-030CSR	3	5	0	180
CG-8058-040CSR	4	4	0	180
CG-8058-060CSR	6	1	0	180

Union 2000 - Special Reinforced Fipt/EPDM - MARINE

SR Fipt x SR Fipt w/EPDM O-ring Seal - Stainless Steel Collar



235 psi Maximum Internal Pressure Rating @ 73°F (23°C)

CG-8098-005CSR	1/2	20	160	180
CG-8098-007CSR	3/4	20	80	180
CG-8098-010CSR	1	15	90	180
CG-8098-012CSR	1-1/4	10	0	180
CG-8098-015CSR	1-1/2	10	0	180
CG-8098-020CSR	2	5	0	180
CG-8098-025CSR	2-1/2	5	0	180
CG-8098-030CSR	3	5	0	180
CG-8098-040CSR	4	4	0	180
CG-8098-060CSR	6	1	0	180

Tank Adapters, CPVC New Style Standard with Neoprene Gaskets - MARINE

Socket x Socket



150 psi Maximum Internal Pressure Rating @ 73°F (23°C)

CG-8170-005C	1/2	25	0	180
CG-8170-007C	3/4	25	0	180
CG-8170-010C	1	25	0	180
CG-8170-012C	1-1/4	20	0	180
CG-8170-015C	1-1/2	20	0	180
CG-8170-020C	2	15	0	180
CG-8170-025C	2-1/2	4	0	180
CG-8170-030C	3	4	0	180
CG-8170-040C	4	2	0	180
CG-8170-060C	6	1	0	180
CG-8170-080C	8	1	0	180

Tank Adapters, CPVC New Style Standard with EPDM Gaskets -MARINE

Socket x Socket



150 psi Maximum Internal Pressure Rating @ 73°F (23°C)

CG-8170E-005C	1/2	25	0	180
CG-8170E-007C	3/4	25	0	180

Part Number	Size	Std Pk	Mstr Ctn	Prod Code
-------------	------	--------	----------	-----------

Tank Adapters, CPVC New Style Standard with EPDM Gaskets - MARINE (continued)

Socket x Socket

CG-8170E-010C	1	25	0	180
CG-8170E-012C	1-1/4	20	0	180
CG-8170E-015C	1-1/2	20	0	180
CG-8170E-020C	2	15	0	180
CG-8170E-025C	2-1/2	4	0	180
CG-8170E-030C	3	4	0	180
CG-8170E-040C	4	2	0	180
CG-8170E-060C	6	1	0	180
CG-8170E-080C	8	1	0	180

Tank Adapters, CPVC New Style Standard with FKM Gaskets - MARINE

Socket x Socket



150 psi Maximum Internal Pressure Rating @ 73°F (23°C)

CG-8170V-005C	1/2	25	0	180
CG-8170V-007C	3/4	25	0	180
CG-8170V-010C	1	25	0	180
CG-8170V-012C	1-1/4	20	0	180
CG-8170V-015C	1-1/2	20	0	180
CG-8170V-020C	2	15	0	180
CG-8170V-025C	2-1/2	4	0	180
CG-8170V-030C	3	4	0	180
CG-8170V-040C	4	2	0	180
CG-8170V-060C	6	1	0	180
CG-8170V-080C	8	1	0	180

Tank Adapter, CPVC Self Aligning with Neoprene Gasket - MARINE

Fipt



75 psi Maximum Internal Pressure Rating @ 73°F (23°C)

CG-8172SA-010C	1	5	0	180
CG-8172SA-020C	2	4	0	180
CG-8172SA-030C	3	2	0	180

Tank Adapter, CPVC Self Aligning with EPDM Gasket - MARINE

Fipt



Tank Adapter, CPVC Self Aligning with EPDM Gasket

CG-8172ESA-010C	1	5	0	180
CG-8172ESA-020C	2	4	0	180
CG-8172ESA-030C	3	2	0	180

Tank Adapter, CPVC Self Aligning with FKM Gasket - MARINE

Fipt



75 psi Maximum Internal Pressure Rating @ 73°F (23°C)

CG-8172VSA-010C	1	5	0	180
CG-8172VSA-020C	2	4	0	180

Marine & Offshore Products
EverTUFF® CPVC Schedule 40 & 80 Marine Pressure Pipe & Fittings



EverTUFF® CPVC Schedule 40 & 80 Marine Pressure Pipe & Fittings

Part Number	Size	Std Pk	Mstr Ctn	Prod Code
-------------	------	--------	----------	-----------

Tank Adapter, CPVC Self Aligning with FKM Gasket - MARINE

(continued)

Fipt

CG-8172VSA-030C	3	2	0	180
-----------------	---	---	---	-----

Flange One Piece - MARINE



Socket

150 psi Maximum Internal Pressure Rating @ 73°F (23°C)

CG-851-005C	1/2	25	0	172
CG-851-007C	3/4	25	0	172
CG-851-010C	1	15	0	172
CG-851-012C	1-1/4	15	0	172
CG-851-015C	1-1/2	20	0	172
CG-851-020C	2	10	0	172
CG-851-025C	2-1/2	10	0	172
CG-851-030C	3	10	0	172
CG-851-040C	4	5	0	172
CG-851-060C	6	5	0	172
CG-851-080C	8	2	0	172
CG-851-100C	10	2	0	181
CG-851-120C	12	2	0	181

Flange - Blind - MARINE



150 psi Maximum Internal Pressure Rating @ 73°F (23°C)

CG-853-005C	1/2	25	100	172
CG-853-007C	3/4	25	0	172
CG-853-010C	1	20	0	172
CG-853-012C	1-1/4	20	0	172
CG-853-015C	1-1/2	15	0	172
CG-853-020C	2	10	0	172
CG-853-025C	2-1/2	10	0	172
CG-853-030C	3	10	0	172
CG-853-040C	4	8	0	172
CG-853-060C	6	5	0	172
CG-853-080C	8	5	0	172
CG-853-100C	10	3	0	181
CG-853-120C	12	2	0	181

Flange Van Stone Style with Plastic Ring - MARINE



Socket

150 psi = maximum internal pressure rating @ 73°F (23°C)

CG-854-005C	1/2	25	0	172
CG-854-007C	3/4	25	0	172
CG-854-010C	1	15	0	172

Part Number	Size	Std Pk	Mstr Ctn	Prod Code
-------------	------	--------	----------	-----------

Flange Van Stone Style with Plastic Ring - MARINE (continued)

Socket

CG-854-012C	1-1/4	15	0	172
CG-854-015C	1-1/2	20	0	172
CG-854-020C	2	10	0	172
CG-854-025C	2-1/2	10	0	172
CG-854-030C	3	10	0	172
CG-854-040C	4	5	0	172
CG-854-060C	6	5	0	172
CG-854-080C	8	2	0	172
CG-854-100C	10	2	0	181
CG-854-120C	12	2	0	181

Flange Van Stone Style with Plastic Ring- PN10/16 - MARINE- Socket



Socket

150 psi = maximum internal pressure rating @ 73°F (23°C)

CG-854-005PN10C	1/2	25	0	172
CG-854-007PN10C	3/4	25	0	172
CG-854-010PN10C	1	15	0	172
CG-854-012PN10C	1-1/4	15	0	172
CG-854-015PN10C	1-1/2	20	0	172
CG-854-020PN10C	2	10	0	172
CG-854-025PN10C	2-1/2	10	0	172
CG-854-030PN10C	3	10	0	172
CG-854-040PN10C	4	5	0	172
CG-854-060PN10C	6	5	0	172
CG-854-080PN10C	8	2	0	172
CG-854-100PN10C	10	2	0	181
CG-854-120PN10C	12	2	0	181

Flange Van Stone Style with Plastic Ring - MARINE



Spigot

150 psi Maximum Internal Pressure Rating @ 73°F (23°C)

CG-856-005C	1/2	25	0	172
CG-856-007C	3/4	25	0	172
CG-856-010C	1	15	0	172
CG-856-012C	1-1/4	15	0	172
CG-856-015C	1-1/2	15	0	172
CG-856-020C	2	10	0	172
CG-856-025C	2-1/2	10	0	172
CG-856-030C	3	10	0	172
CG-856-040C	4	5	0	172
CG-856-060C	6	4	0	172
CG-856-080C	8	2	0	172
CG-856-100C	10	2	0	181
CG-856-120C	12	2	0	181

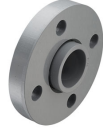


Marine & Offshore Products
EverTUFF® CPVC Schedule 40 & 80 Marine Pressure Pipe & Fittings

EverTUFF® CPVC Schedule 40 & 80 Marine Pressure Pipe & Fittings

Part Number	Size	Std Pk	Mstr Ctn	Prod Code
-------------	------	--------	----------	-----------

Flange Van Stone Style Class 300 Bolt Pattern Fabricated with Plastic Ring - MARINE



Socket

Molded with fabricated ring - 150 psi = maximum internal pressure rating @ 73°F (23°C)

Part Number	Size	Std Pk	Mstr Ctn	Prod Code
CG-854005CL300C	1/2	1	25	182
CG-854007CL300C	3/4	1	25	182
CG-854010CL300C	1	1	15	182
CG-854012CL300C	1-1/4	1	15	182
CG-854015CL300C	1-1/2	1	20	182
CG-854020CL300C	2	1	10	182
CG-854025CL300C	2-1/2	1	10	182
CG-854030CL300C	3	1	10	182
CG-854040CL300C	4	1	5	182
CG-854060CL300C	6	1	4	182
CG-854080CL300C	8	1	3	182
CG-854100CL300C	10	1	2	183
CG-854120CL300C	12	1	0	183

Flange One Piece Multi-Bolt Pattern* - MARINE



ASTM Socket x Multi-bolt Pattern Ring

150 psi Maximum Internal Pressure Rating @ 73°F (23°C)

Part Number	Size	Std Pk	Mstr Ctn	Prod Code
CG-M851-100C	10	2	0	172
CG-M851-120C	12	2	0	172

Hubs fit 10" and 12" ASTM IPS pipe. Rings are manufactured to accept bolt patterns in size 10" and 12" in ANSI Class 150, B.S. 4504 PN10, B.S. 4504 PN16, B.S. 10 Table E for size 10". Consult Spears® Manufacturing Company Technical Services for additional information. Not for use with wafer valves.

Flange Van Stone Style with Plastic Ring ASTM - MARINE



Socket x Multi-bolt Pattern Ring

150 psi Maximum Internal Pressure Rating @ 73°F (23°C)

Part Number	Size	Std Pk	Mstr Ctn	Prod Code
CG-M854-020C	2	10	0	172
CG-M854-060C	6	4	0	172
CG-M854-080C	8	2	0	172

Clamp-On Saddle x Socket Single Outlet, CPVC Gray - MARINE

with EPDM O-ring Seal & SS Hardware

2"- 4" 235, 6" 200, 8"-12" 150 psi @ 73°F (23°C)

Part Number	Size	Std Pk	Mstr Ctn	Prod Code
CG-866S-247C	2X1/2	1	10	180
CG-866S-248C	2X3/4	1	10	180

Part Number	Size	Std Pk	Mstr Ctn	Prod Code
-------------	------	--------	----------	-----------

Clamp-On Saddle x Socket Single Outlet, CPVC Gray - MARINE

(continued)

with EPDM O-ring Seal & SS Hardware

CG-866S-249C	2X1	1	10	180
CG-866S-250C	2X1-1/4	1	10	180
CG-866S-251C	2X1-1/2	1	10	180
CG-866S-291C	2-1/2X1-1/2	1	10	180
CG-866S-333C	3X1/2	1	10	180
CG-866S-334C	3X3/4	1	10	180
CG-866S-335C	3X1	1	10	180
CG-866S-336C	3X1-1/4	1	10	180
CG-866S-337C	3X1-1/2	1	10	180
CG-866S-338C	3X2	1	10	180
CG-866S-415C	4X1/2	1	10	180
CG-866S-416C	4X3/4	1	10	180
CG-866S-417C	4X1	1	8	180
CG-866S-418C	4X1-1/4	1	8	180
CG-866S-419C	4X1-1/2	1	8	180
CG-866S-420C	4X2	1	8	180
CG-866S-421C	4X2-1/2	1	4	180
CG-866S-422C	4X3	1	4	180
CG-866S-523C	6X1/2	1	4	180
CG-866S-524C	6X3/4	1	4	180
CG-866S-525C	6X1	1	4	180
CG-866S-526C	6X1-1/4	1	4	180
CG-866S-527C	6X1-1/2	1	4	180
CG-866S-528C	6X2	1	4	180
CG-866S-529C	6X2-1/2	1	4	180
CG-866S-530C	6X3	1	4	180
CG-866S-532C	6X4	1	4	180
CG-866S-573C	8X1/2	1	0	180
CG-866S-574C	8X3/4	1	0	180
CG-866S-575C	8X1	1	0	180
CG-866S-576C	8X1-1/4	1	0	180
CG-866S-577C	8X1-1/2	1	0	180
CG-866S-578C	8X2	1	0	180
CG-866S-579C	8X2-1/2	1	0	180
CG-866S-580C	8X3	1	0	180
CG-866S-582C	8X4	1	0	180
CG-866S-585C	8X6	1	0	180
CG-866S-624C	10X4	1	0	180
CG-866S-626C	10X6	1	0	180
CG-866S-664C	12X4	1	0	180
CG-866S-666C	12X6	1	0	180

¹ Outlet-sized with Bushing

Clamp-On Saddle x Socket Single Outlet, CPVC Gray - MARINE

with FKM O-ring Seal & SS Hardware

2"- 4" 235, 6" 200, 8"-12" 150 psi @ 73°F (23°C)

Part Number	Size	Std Pk	Mstr Ctn	Prod Code
CG-866SV-247C	2X1/2	1	10	180
CG-866SV-248C	2X3/4	1	10	180
CG-866SV-249C	2X1	1	10	180

Marine & Offshore Products
EverTUFF® CPVC Schedule 40 & 80 Marine Pressure Pipe & Fittings



EverTUFF® CPVC Schedule 40 & 80 Marine Pressure Pipe & Fittings

Part Number	Size	Std Pk	Mstr Ctn	Prod Code
-------------	------	--------	----------	-----------

Clamp-On Saddle x Socket Single Outlet, CPVC Gray - MARINE

(continued)

with FKM O-ring Seal & SS Hardware

CG-866SV-250C	2X1-1/4	1	10	180
CG-866SV-251C	2X1-1/2	1	10	180
CG-866SV-291C	2-1/2X1-1/2	1	10	180
CG-866SV-333C	3X1/2	1	10	180
CG-866SV-334C	3X3/4	1	10	180
CG-866SV-335C	3X1	1	10	180
CG-866SV-336C	3X1-1/4	1	10	180
CG-866SV-337C	3X1-1/2	1	10	180
CG-866SV-338C	3X2	1	10	180
CG-866SV-415C	4X1/2	1	10	180
CG-866SV-416C	4X3/4	1	10	180
CG-866SV-417C	4X1	1	8	180
CG-866SV-418C	4X1-1/4	1	8	180
CG-866SV-420C	4X2	1	8	180
CG-866SV-421C	4X2-1/2	1	4	180
CG-866SV-419C	4X1-1/2	1	8	180
CG-866SV-422C	4X3	1	4	180
CG-866SV-523C	6X1/2	1	4	180
CG-866SV-524C	6X3/4	1	4	180
CG-866SV-525C	6X1	1	4	180
CG-866SV-526C	6X1-1/4	1	4	180
CG-866SV-527C	6X1-1/2	1	4	180
CG-866SV-528C	6X2	1	4	180
CG-866SV-529C	6X2-1/2	1	4	180
CG-866SV-530C	6X3	1	4	180
CG-866SV-532C	6X4	1	4	180
CG-866SV-573C	8X1/2	1	0	180
CG-866SV-574C	8X3/4	1	0	180
CG-866SV-575C	8X1	1	0	180
CG-866SV-576C	8X1-1/4	1	0	180
CG-866SV-577C	8X1-1/2	1	0	180
CG-866SV-578C	8X2	1	0	180
CG-866SV-579C	8X2-1/2	1	0	180
CG-866SV-580C	8X3	1	0	180
CG-866SV-582C	8X4	1	0	180
CG-866SV-585C	8X6	1	0	180
CG-866SV-624C	10X4	1	0	180
CG-866SV-626C	10X6	1	0	180
CG-866SV-664C	12X4	1	0	180
CG-866SV-666C	12X6	1	0	180

¹ Outlet-sized with Bushing

Part Number	Size	Std Pk	Mstr Ctn	Prod Code
-------------	------	--------	----------	-----------

Hot-Tap Saddle CPVC Gray - MARINE

EPDM with Stainless Steel Cutter & Bolts

2"- 4" 235, 6" 200, 8" 150 psi @ 73°F (23°C)

CG-HT2S-248C	2X3/4	1	5	180
CG-HT2S-251C	2X1-1/2	1	5	180
CG-HT2S-288C	2-1/2X3/4	1	5	180
CG-HT2S-291C	2-1/2X1-1/2	1	5	180
CG-HT2S-334C	3X3/4	1	5	180
CG-HT2S-337C	3X1-1/2	1	5	180
CG-HT2S-416C	4X3/4	1	5	180
CG-HT2S-419C	4X1-1/2	1	0	180
CG-HT2S-524C	6X3/4	1	5	180
CG-HT2S-527C	6X1-1/2	1	0	180
CG-HT2S-574C	8X3/4	1	0	180
CG-HT2S-577C	8X1-1/2	1	0	180

Lead Free

Hot-Tap Saddle CPVC Gray - MARINE

FKM with Stainless Steel Cutter & Bolts

2"- 4" 235, 6" 200, 8" 150 psi @ 73°F (23°C)

CG-HT3S-248C	2X3/4	1	5	180
CG-HT3S-251C	2X-1-1/2	1	5	180
CG-HT3S-288C	2-1/2X3/4	1	5	180
CG-HT3S-291C	2-1/2X1-1/2	1	5	180
CG-HT3S-334C	3X3/4	1	5	180
CG-HT3S-337C	3X1-1/2	1	5	180
CG-HT3S-416C	4X3/4	1	5	180
CG-HT3S-419C	4X1-1/2	1	0	180
CG-HT3S-524C	6X3/4	1	5	180
CG-HT3S-527C	6X1-1/2	1	0	180
CG-HT3S-574C	8X3/4	1	0	180
CG-HT3S-577C	8X1-1/2	1	5	180

Lead Free

Fabricated Expansion Joints - CPVC - MARINE

6" Travel with EPDM O-rings

1/2" - 2" 235 psi @ 73°F (23°C)

2-1/2" - 12" 150 psi @ 73°F (23°C)

CG-826E-005X6C	1/2	10	0	180
----------------	-----	----	---	-----

Made in the U.S.A.

Suitable for Oil-Free air handling to 25 psi, not for distribution of compressed air or gas
 See MSRP-1 Sheet or Check Spears® On-line Catalog @ www.spearsmfg.com for Pricing



Marine & Offshore Products
EverTUFF® CPVC Schedule 40 & 80 Marine Pressure Pipe & Fittings

EverTUFF® CPVC Schedule 40 & 80 Marine Pressure Pipe & Fittings

Part Number	Size	Std Pk	Mstr Ctn	Prod Code
-------------	------	--------	----------	-----------

Fabricated Expansion Joints - CPVC - MARINE (continued)

6" Travel with EPDM O-rings

CG-826E-007X6C	3/4	6	0	180
CG-826E-010X6C	1	5	0	180
CG-826E-012X6C	1 1/4	4	0	180
CG-826E-015X6C	1-1/2	4	0	180
CG-826E-020X6C	2	2	0	180
CG-826E-025X6C	2-1/2	1	0	180
CG-826E-030X6C	3	1	0	180
CG-826E-040X6C	4	1	0	180
CG-826E-060X6C	6	1	0	180
CG-826E-080X6C	8	1	0	180
CG-826E-100X6C	10	1	0	180
CG-826E-120X6C	12	1	0	180

Fabricated Expansion Joints - CPVC - MARINE

12" Travel with EPDM O-rings

1/2" - 2" 235 psi @ 73°F (23°C)
 2-1/2" - 12" 150 psi @ 73°F (23°C)

CG-826E-005X12C	1/2	1	0	180
CG-826E-007X12C	3/4	1	0	180
CG-826E-010X12C	1	1	5	180
CG-826E-012X12C	1-1/4	1	0	180
CG-826E-015X12C	1-1/2	4	0	180
CG-826E-020X12C	2	2	0	180
CG-826E-025X12C	2-1/2	1	0	180
CG-826E-030X12C	3	1	0	180
CG-826E-040X12C	4	1	0	180
CG-826E-060X12C	6	1	0	180
CG-826E-080X12C	8	1	0	180
CG-826E-100X12C	10	1	0	180
CG-826E-120X12C	12	1	0	180

Fabricated Expansion Joints - CPVC - MARINE

6" Travel with FKM O-rings

1/2" - 2" 235 psi @ 73°F (23°C)
 2-1/2" - 12" 150 psi @ 73°F (23°C)

CG-826-005X6C	1/2	10	0	180
CG-826-007X6C	3/4	6	0	180
CG-826-010X6C	1	5	0	180
CG-826-012X6C	1-1/4	4	0	180

Part Number	Size	Std Pk	Mstr Ctn	Prod Code
-------------	------	--------	----------	-----------

Fabricated Expansion Joints - CPVC - MARINE (continued)

6" Travel with FKM O-rings

CG-826-015X6C	1-1/2	4	0	180
CG-826-020X6C	2	2	0	180
CG-826-025X6C	2-1/2	1	0	180
CG-826-030X6C	3	1	0	180
CG-826-040X6C	4	1	0	180
CG-826-060X6C	6	1	0	180
CG-826-080X6C	8	1	0	180
CG-826-100X6C	10	1	0	180
CG-826-120X6C	12	1	0	180

Fabricated Expansion Joints - CPVC - MARINE

12" Travel with FKM O-rings

1/2" - 2" 235 psi @ 73°F (23°C)
 2-1/2" - 12" 150 psi @ 73°F (23°C)

CG-826-005X12C	1/2	10	0	180
CG-826-007X12C	3/4	6	0	180
CG-826-010X12C	1	5	0	180
CG-826-012X12C	1-1/4	4	0	180
CG-826-015X12C	1-1/2	4	0	180
CG-826-020X12C	2	2	0	180
CG-826-025X12C	2-1/2	1	0	180
CG-826-030X12C	3	1	0	180
CG-826-040X12C	4	1	0	180
CG-826-060X12C	6	1	0	180
CG-826-080X12C	8	1	0	180
CG-826-100X12C	10	1	0	180
CG-826-120X12C	12	1	0	180

GripLoc™ Coupling - MARINE

WARNING: DO NOT INSERT FINGERS
EPDM Gasket
Pressure Rated to 235 psi @ 73°F



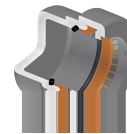
Uses No Solvent Cement.

CG-GL429-005C	1/2	1	40	184
CG-GL429-007C	3/4	1	36	184
CG-GL429-010C	1	1	20	184
CG-GL429-012C	1-1/4	1	15	184
CG-GL429-015C	1-1/2	1	15	184
CG-GL429-020C	2	1	10	184

Gripper is 410 Stainless Steel

GripLoc™ Cap - MARINE

WARNING: DO NOT INSERT FINGERS
EPDM Gasket
Pressure Rated to 235 psi @ 73°F



Uses No Solvent Cement.

CG-GL447-005C	1/2	25	150	184
CG-GL447-007C	3/4	1	50	184



EverTUFF® CPVC Schedule 40 & 80 Marine Pressure Pipe & Fittings

Part Number	Size	Std Pk	Mstr Ctn	Prod Code
-------------	------	--------	----------	-----------

GripLoc™ Cap - MARINE (continued)

WARNING: DO NOT INSERT FINGERS

EPDM Gasket

Pressure Rated to 235 psi @ 73°F

CG-GL447-010C	1	1	50	184
CG-GL447-012C	1-1/4	1	25	184
CG-GL447-015C	1-1/2	1	25	184
CG-GL447-020C	2	1	25	184

Gripper is 410 Stainless Steel

Valves - ABS & USCG Approved

True Union 2000 Industrial Ball Valves - EPDM - MARINE



Socket

CG-1829-005C	1/2	1	18	179
CG-1829-007C	3/4	1	18	179
CG-1829-010C	1	1	12	179
CG-1829-012C	1-1/4	1	8	179
CG-1829-015C	1-1/2	1	8	179
CG-1829-020C	2	1	4	179
CG-1822-025C	2-1/2	1	0	179
CG-1822-030C	3	1	0	179
CG-1822-040C	4	1	0	179
CG-1822-060C	6	1	0	179
CG-1822-080C	8	1	0	179

1/2" - 4" ABS type approved
1/2" - 8 USCG applications

True Union 2000 Industrial Ball Valves - FKM - MARINE



Socket

CG-1839-005C	1/2	1	18	179
CG-1839-007C	3/4	1	18	179
CG-1839-010C	1	1	12	179
CG-1839-012C	1-1/4	1	8	179
CG-1839-015C	1-1/2	1	8	179
CG-1839-020C	2	1	4	179
CG-1832-025C	2-1/2	1	0	179
CG-1832-030C	3	1	0	179
CG-1832-040C	4	1	0	179
CG-1832-060C	6	1	0	179
CG-1832-080C	8	1	0	179

1/2" - 4" ABS type approved
1/2" - 8 USCG applications

Part Number	Size	Std Pk	Mstr Ctn	Prod Code
-------------	------	--------	----------	-----------

True Union 2000 Standard Ball Valves - EPDM - MARINE



Socket

CG-3629-005C	1/2	1	18	179
CG-3629-007C	3/4	1	18	179
CG-3629-010C	1	1	12	179
CG-3629-012C	1-1/4	1	8	179
CG-3629-015C	1-1/2	1	8	179
CG-3629-020C	2	1	4	179
CG-3622-025C	2-1/2	1	0	179
CG-3622-030C	3	1	0	179
CG-3622-040C	4	1	0	179

True Union 2000 Standard Ball Valves - FKM - MARINE



Socket

CG-3639-005C	1/2	1	18	179
CG-3639-007C	3/4	1	18	179
CG-3639-010C	1	1	12	179
CG-3639-012C	1-1/4	1	8	179
CG-3639-015C	1-1/2	1	8	179
CG-3639-020C	2	1	4	179
CG-3632-025C	2-1/2	1	0	179
CG-3632-030C	3	1	0	179
CG-3632-040C	4	1	0	179

True Union 2000 Vertical 3-Way Ball Valves, L-Port, EPDM - MARINE



Socket

CG-4722L1-005C	1/2	1	12	179
CG-4722L1-007C	3/4	1	8	179
CG-4722L1-010C	1	1	8	179
CG-4722L1-012C	1-1/4	1	8	179
CG-4722L1-015C	1-1/2	1	8	179
CG-4722L1-020C	2	1	4	179
CG-4722L1-025C	2-1/2	1	0	179
CG-4722L1-030C	3	1	0	179
CG-4722L1-040C	4	1	0	179

USCG Application Only

True Union 2000 Vertical 3-Way Ball Valves, L-Port, FKM - MARINE



Socket

CG-4732L1-005C	1/2	1	12	179
CG-4732L1-007C	3/4	1	8	179
CG-4732L1-010C	1	1	8	179
CG-4732L1-015C	1-1/2	1	8	179
CG-4732L1-012C	1-1/4	1	8	179
CG-4732L1-020C	2	1	4	179
CG-4732L1-025C	2-1/2	1	0	179
CG-4732L1-030C	3	1	0	179



Marine & Offshore Products
EverTUFF® CPVC Schedule 40 & 80 Marine Pressure Pipe & Fittings

Valves - ABS & USCG Approved

Part Number	Size	Std Pk	Mstr Ctn	Prod Code
-------------	------	--------	----------	-----------

True Union 2000 Vertical 3-Way Ball Valves, L-Port, FKM - MARINE (continued)

Socket

CG-4732L1-040C	4	1	0	179
----------------	---	---	---	-----

USCG Application Only

True Union 2000 Horizontal 3-Way Diverter Ball Valves, EPDM, T-Port - MARINE



Socket

CG-5022T1-005C	1/2	1	12	179
CG-5022T1-007C	3/4	1	8	179
CG-5022T1-010C	1	1	8	179
CG-5022T1-012C	1-1/4	1	8	179
CG-5022T1-015C	1-1/2	1	8	179
CG-5022T1-020C	2	1	0	179
CG-5022T1-025C	2-1/2	1	0	179
CG-5022T1-030C	3	1	0	179
CG-5022T1-040C	4	1	0	179

USCG Application Only

True Union 2000 Horizontal 3-Way Diverter Ball Valves, FKM, T-Port - MARINE



Socket

CG-5032T1-005C	1/2	1	12	179
CG-5032T1-007C	3/4	1	8	179
CG-5032T1-010C	1	1	8	179
CG-5032T1-012C	1-1/4	1	8	179
CG-5032T1-015C	1-1/2	1	8	179
CG-5032T1-020C	2	1	0	179
CG-5032T1-025C	2-1/2	1	0	179
CG-5032T1-030C	3	1	0	179
CG-5032T1-040C	4	1	0	179

USCG Application Only

True Union 2000 Industrial Ball Check Valves - EPDM - MARINE



Socket

CG-4529-005C	1/2	1	18	179
CG-4529-007C	3/4	1	18	179
CG-4529-010C	1	1	18	179
CG-4529-012C	1-1/4	1	12	179
CG-4529-015C	1-1/2	1	8	179
CG-4529-020C	2	1	8	179
CG-4522-025C	2-1/2	1	0	179
CG-4522-030C	3	1	0	179
CG-4522-040C	4	1	0	179
CG-4522-060C	6	1	0	179
CG-4522-080C	8	1	0	179

1/2" - 4" ABS type approved
 1/2" - 8 USCG applications

Part Number	Size	Std Pk	Mstr Ctn	Prod Code
-------------	------	--------	----------	-----------

True Union 2000 Industrial Ball Check Valves - FKM - MARINE



Socket

CG-4539-005C	1/2	1	18	179
CG-4539-007C	3/4	1	18	179
CG-4539-010C	1	1	18	179
CG-4539-012C	1-1/4	1	12	179
CG-4539-015C	1-1/2	1	8	179
CG-4539-020C	2	1	8	179
CG-4532-025C	2-1/2	1	0	179
CG-4532-030C	3	1	0	179
CG-4532-040C	4	1	0	179
CG-4532-060C	6	1	0	179
CG-4532-080C	8	1	0	179

1/2" - 4" ABS type approved
 1/2" - 8 USCG applications

Compact 2000 Ball Valves - EPDM - MARINE



Socket

CG-6622-005C	1/2	10	120	179
CG-6622-007C	3/4	10	80	179
CG-6622-010C	1	10	0	179
CG-6622-012C	1-1/4	6	0	179
CG-6622-015C	1-1/2	5	0	179
CG-6622-020C	2	8	0	179

USCG Application Only

Compact 2000 Ball Valves - FKM - MARINE



Socket

CG-6632-005C	1/2	10	120	179
CG-6632-007C	3/4	10	80	179
CG-6632-010C	1	10	0	179
CG-6632-012C	1-1/4	6	0	179
CG-6632-015C	1-1/2	5	0	179
CG-6632-020C	2	8	0	179

USCG Application Only

Butterfly Valve, Standard - EPDM - MARINE

Lever Handle

CG-722311-015C	1-1/2	1	0	179
CG-722311-020C	2	1	0	179
CG-722311-025C	2-1/2	1	0	179
CG-722311-030C	3	1	0	179
CG-722311-040C	4	1	0	179
CG-722311-060C	6	1	0	179

Marine & Offshore Products
EverTUFF® CPVC Schedule 40 & 80 Marine Pressure Pipe & Fittings



Valves - ABS & USCG Approved

Part Number	Size	Std Pk	Mstr Ctn	Prod Code
-------------	------	--------	----------	-----------

Butterfly Valve, Standard - EPDM - MARINE (continued)

Lever Handle

CG-722311-080C	8	1	0	179
1-1/2" - 6" ABS type approved 1-1/2" - 12 USCG applications				

Butterfly Valve, Standard, EPDM, MARINE

Gear Operator

CG-722321-100C	10	1	0	179
CG-722321-120C	12	1	0	179
1-1/2" - 12 USCG applications				

Butterfly Valves, Standard - FKM - MARINE

Lever Handle

CG-723311-015C	1-1/2	1	0	179
CG-723311-020C	2	1	0	179
CG-723311-030C	3	1	0	179
CG-723311-040C	4	1	0	179
CG-723311-060C	6	1	0	179
CG-723311-080C	8	1	0	179
1-1/2" - 6" ABS type approved 1-1/2" - 12 USCG applications				

Butterfly Valve, Standard, FKM, MARINE

Gear Operator

CG-723321-100C	10	1	0	179
CG-723321-120C	12	1	0	179
1-1/2" - 12 USCG applications				

Part Number	Size	Std Pk	Mstr Ctn	Prod Code
-------------	------	--------	----------	-----------

Wafer Butterfly Valves Standard -EPDM - MARINE

Lever Handle

CG-752311-020C	2	1	0	179
CG-752311-025C	2-1/2	1	0	179
CG-752311-030C	3	1	0	179
CG-752311-040C	4	1	0	179
CG-752311-060C	6	1	0	179
CG-752311-080C	8	1	0	179
CG-752321-100C	10	1	0	179
CG-752321-120C	12	1	0	179

2" - 6" ABS type approved
2" - 12 USCG applications

Wafer Butterfly Valve, Standard, EPDM, MARINE

Gear Operator

CG-752321-100C	10	1	0	179
CG-752321-120C	12	1	0	179

2" - 12 USCG applications

Wafer Butterfly Valves - Standard, FKM - MARINE

Lever Handle

CG-753311-020C	2	1	0	179
CG-753311-025C	2-1/2	1	0	179
CG-753311-030C	3	1	0	179
CG-753311-040C	4	1	0	179
CG-753311-060C	6	1	0	179
CG-753311-080C	8	1	0	179

2" - 6" ABS type approved
2" - 12 USCG applications



Marine & Offshore Products
EverTUFF® CPVC Schedule 40 & 80 Marine Pressure Pipe & Fittings & MARINE Solvent Cement & Primer - ABS & USCG Approved

Valves - ABS & USCG Approved

Part Number	Size	Std Pk	Mstr Ctn	Prod Code
-------------	------	--------	----------	-----------

Wafer Butterfly Valve, Standard, FKM, MARINE

Gear Operator

CG-753321-100C	10	1	0	179
CG-753321-120C	12	1	0	179
2" - 12 USCG applications				

MARINE Solvent Cement & Primer - ABS & USCG Approved

Marine-24 Solvent Cement - Gray

Requires primer

CG-MARINE24-030	Quart	12	0	178
CG-MARINE24-040	Gallon	6	0	178

PRIMER-70 Purple Industrial Strength Primer - MARINE

PRIM70P-030	Quart	12	0	709
PRIM70P-040	Gallon	6	0	709

PRIMER-70 Clear Industrial Strength Primer - MARINE

PRIM70C-030	Quart	12	0	709
PRIM70C-040	Gallon	6	0	709